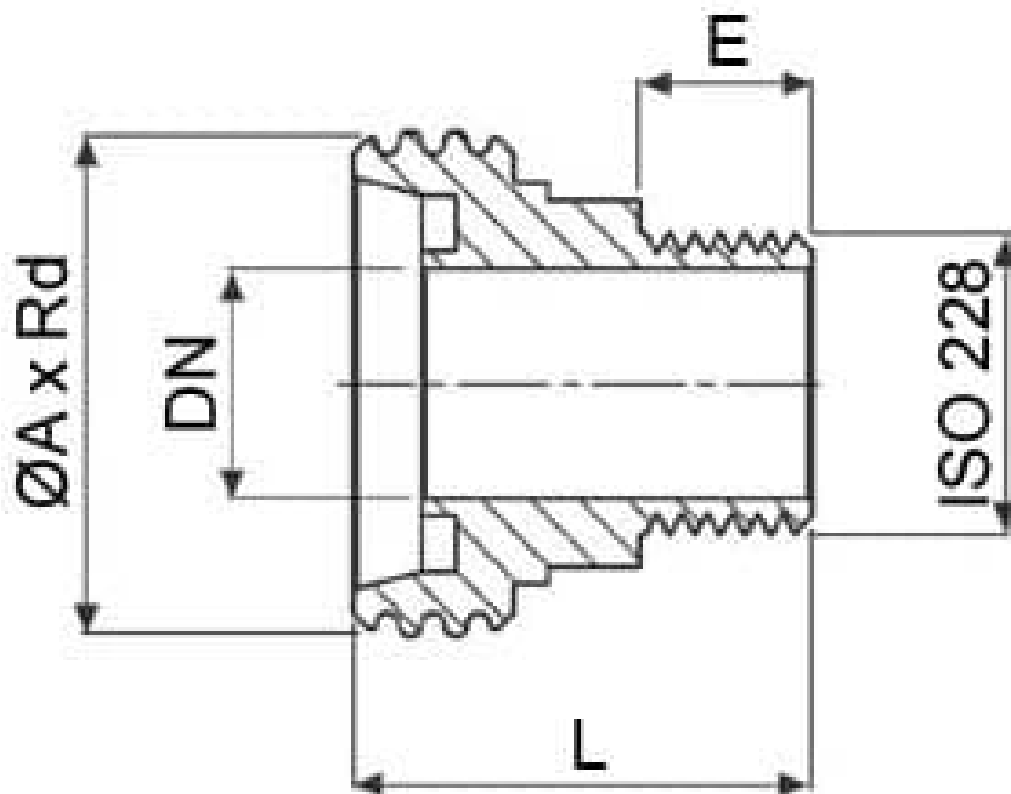


## 765205 FEMMINA DIN 11851 PER MASCHIO ISO 228 GAS CILINDRICO



Femmina DIN 11851 per Maschio ISO 228 GAS CILINDRICO  
Materiale: AISI 316L (1.4404)

A richiesta:  
M.O.C.A. CE 1935/2004



---

DN x ISO 228	Ø A x Rd	E	L	Kg	CODICE AISI 304L	CODICE AISI 316L
10 x 3/8"	28 x 1/8"	13	35	0,06	765205 40800	765205 60800
15 x 1/2"	34 x 1/8"	14	37	0,09	765205 41400	765205 61400
20 x 3/4"	44 x 1/6"	15	40	0,14	765205 42000	765205 62000
25 x 1"	52 x 1/6"	16	46	0,23	765205 42600	765205 62600
32 x 1"1/4	58 x 1/6"	17	47	0,30	765205 43000	765205 63000
40 1"1/2	65 x 1/6"	18	48	0,32	765205 43400	765205 63400
50 x 2"	78 x 1/6"	20	50	0,48	765205 43800	765205 63800
60 x 2"	85 x 1/6"	20	50	0,63	765205 44000	765205 64000
65 2"1/2	95 x 1/6"	20	52	0,71	765205 44400	765205 64400
80 x 3"	110 x 1/4"	25	65	0,99	765205 44800	765205 64800
100 x 4"	130 x 1/4"	25	65	1,32	765205 45400	765205 65400



