

765060 JUNTA GIRATORIA HEMBRA/MACHO OJIVA ISO 228

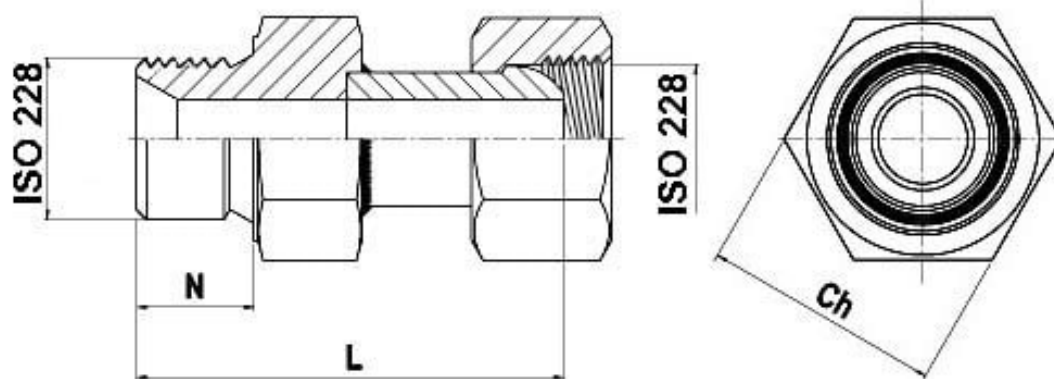


Junta Giratoria Hembra/Macho OJIVA ISO 228

Material: Aisi 316L (1.4404)

A pedido:

M.O.C.A. CE 1935/2004



ISO 228 F/M	N	Ch	L	Kg	CÓDIGO AISI 316
1/4" x 1/4"	11	19	42	0.065	765060 60900
1/4" x 3/8"	11	19 / 22	45	0.077	765060 61200
3/8" x 3/8"	13	22	48	0.098	765060 61800
1/2" x 1/2"	15	27	55	0.150	765060 62700
3/4" x 3/4"	17	32	66	0.240	765060 63600
1" x 1"	19	41	75	0.487	765060 64500

