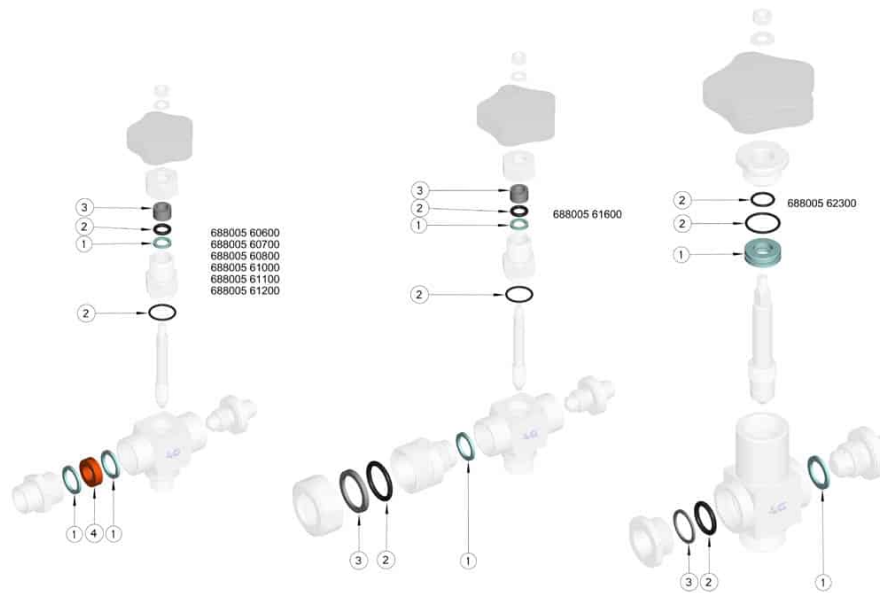

DN ISO228	CODICE PTFE	Kg
3/8"-1/2" x Ø12	808068 00610	0,004
3/8"-1/2" x Ø14	808068 00710	0,004
3/8"-1/2" x Ø16	808068 00810	0,004
1" x Ø 21 for inferior gauge cock	808068 02310	0,004
1" x Ø 21 for superior gauge cock	808068 0231B	0,004



POS.	Denomination	PCS	MAT.
1	Guarnizione asta / Premiguarnizione	1	PTFE
2	OR tenuta perno / tubo vetro	1	NBR o FKM
3	Press-seal	1	PTFE + VETRO
4	Glass tube seal	1	FKM / VITON

