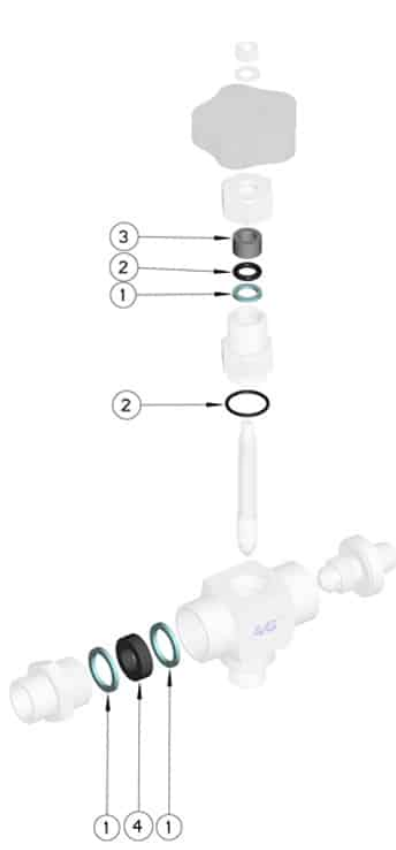


808068 SPARE SEALS KIT FOR SUPERIOR AND INFERIOR GAUGE COCK – STANDARD SEALS

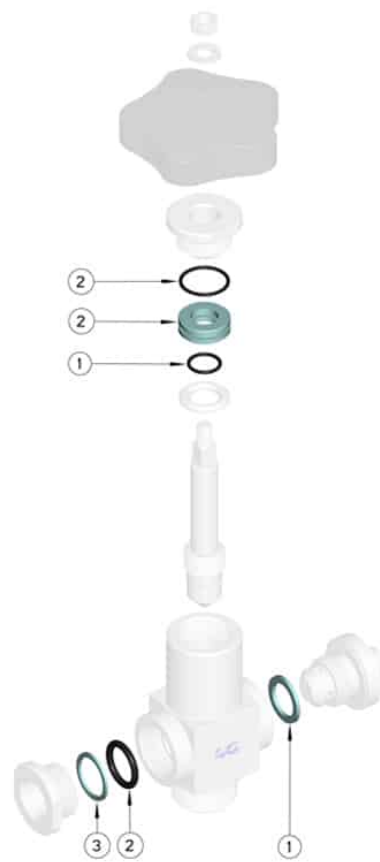


Spare seals kit for superior and inferior gauge cock

Fitting the following articles:
Art. 68



3/8"-1/2" x Ø12
3/8"-1/2" x Ø14
3/8"-1/2" x Ø16



1" x Ø20

| Size | CODE | Kg | VALVOLA |
|--------------------------------------|--------------|-------|---|
| 3/8"-1/2" x Ø12 | 808068 00610 | 0,004 | 688005 06000 - 688005 61000 - 688006 60600 - 688006 61000 |
| 3/8"-1/2" x Ø14 | 808068 00710 | 0,004 | 688005 60700 - 688005 61100 - 688006 60700 - 688006 61100 |
| 3/8"-1/2" x Ø16 | 808068 00810 | 0,004 | 688005 60800 - 688005 61200 - 688006 60800 - 688006 61200 |
| 1" x Ø 20 per portativello inferiore | 808068 02310 | 0,004 | 688005 62300 |
| 1" x Ø 20 per portativello superiore | 808068 0231B | 0,004 | 688006 62300 |

| POS. | DENOMINATION | PCS | MAT. |
|------|-------------------------------------|-----|--------------|
| 1 | Guarnizione asta / Premiguarnizione | 1 | PTFE |
| 2 | OR tenuta perno / tubo vetro | 1 | NBR o FKM |
| 3 | Premiguarnizione | 1 | PTFE + VETRO |
| 4 | Guarnizione tubo vetro | 1 | FKM / VITON |

