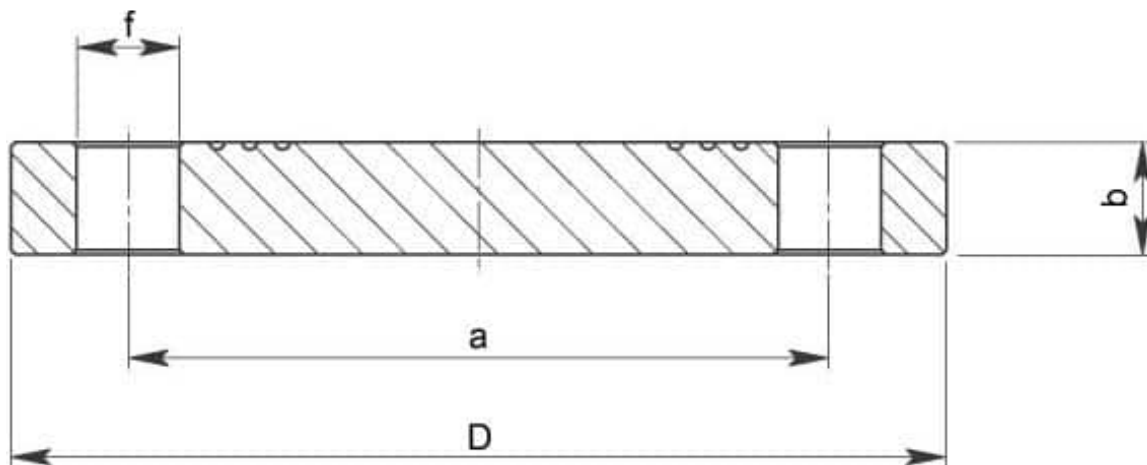


715094 PN 25 - 40 BLIND FLANGES UNI EN 1092-1



Blind flanges PN 25 - 40 UNI EN 1092-1 TYPE 05 from bar
Material: AISI 304L (1.4307) - AISI 316L (1.4404)

On request:
M.O.C.A. CE 1935/2004



DN	D x b	a	f	n° fori	Kg	CODE AISI 304L	CODE AISI 316L
10	90 x 16	60	14	4	0,716	715094 40800	715094 60800
15	95 x 16	65	14	4	0,807	715094 41400	715094 61400
20	105 x 18	75	14	4	1,130	715094 42000	715094 62000
25	115 x 18	85	14	4	1,373	715094 42600	715094 62600
32	140 x 18	100	18	4	2,022	715094 43000	715094 63000
40	150 x 18	110	18	4	2,343	715094 43400	715094 63400
50	165 x 20	125	18	4	3,186	715094 43800	715094 63800
65	185 x 22	145	18	8	4,277	715094 44400	715094 64400
80	200 x 24	160	18	8	5,520	715094 44800	715094 64800
100	235 x 24	190	22	8	7,581	715094 45400	715094 65400
125	270 x 26	220	26	8	10,798	715094 45800	715094 65800
150	300 x 28	250	26	8	14,580	715094 46200	715094 66200

