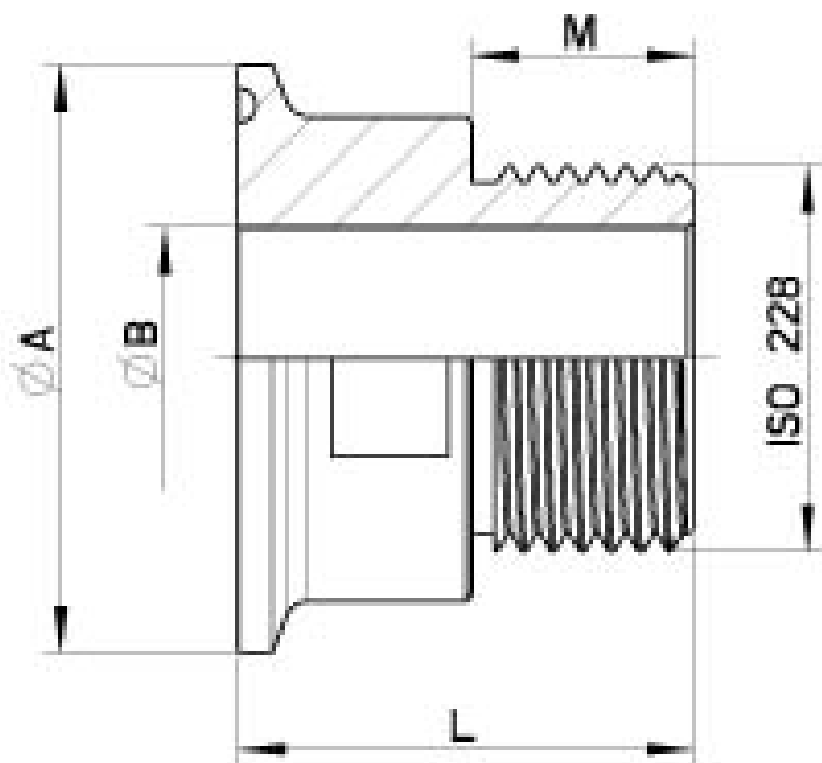


## 768096 CLAMP-A ADAPTOR WITH ISO 228 MALE GAS



CLAMP-A Adaptor with ISO 228 Male GAS  
Material: AISI 316L (1.4404)

On request:  
M.O.C.A. CE 1935/2004



---

CLAMP-A DIN x ISO 228	Ø A	B	M	L	Kg	CODE AISI 316L
10 x 1/4"	34	9	13	38	0,097	768096 60700
10 x 3/8"	34	10	15	40	0,102	768096 60800
20 x 1/2"	34	20	15	40	0,071	768096 62200
20 x 3/4"	34	20	17	43	0,106	768096 62300
25 x 1"	50,5	26	19	39	0,194	768096 63200
40 x 1"1/2	50,5	38	20	40	0,150	768096 64900
80 x 3"	106	81	22	50	0,630	768096 67900



