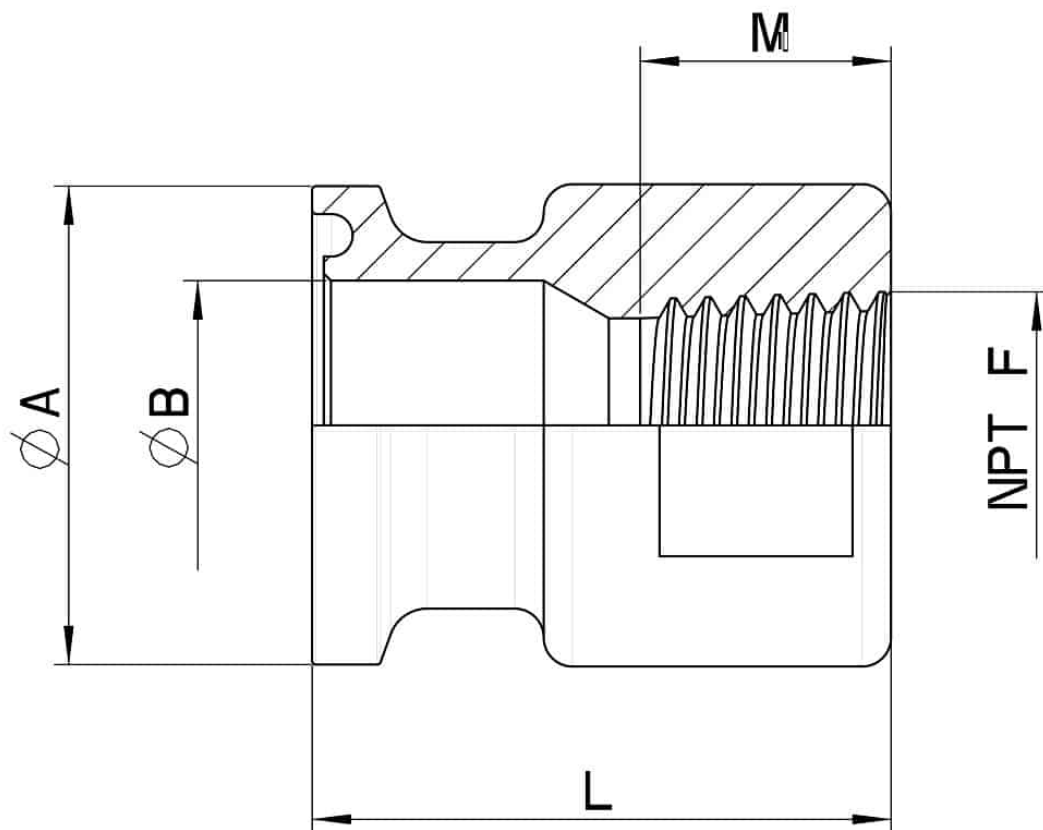


768033 CLAMP ADAPTOR WITH NPT FEMALE



CLAMP Adaptor with Female NPT
Material: AISI 316L (1.4404)

On request:
M.O.C.A. CE 1935/2004



CLAMP x NPT	Ø A	B	M	L	Kg	CODE AISI 316L
1/2" x 1/4"	25	9,4	13	30	0,072	768033 60500
1/2" x 1/2"	25	9,4	18	35	0,091	768033 60700
3/4" x 1/4"	25	15,0	13	30	0,062	768033 61400
3/4" x 3/4"	25	15,75	19	37	0,112	768033 61700
1" x 1/4"	50,5	22,5	13	30	0,267	768033 63200
1" x 3/8"	50,5	22,5	13	30	0,255	768033 63300
1" x 1"	50,5	22,5	19	30	0,170	768033 63600
1"1/2 x 1"	50,5	34,8	19	30	0,145	768033 65000
1"1/2 x 1"1/4	50,5	34,8	20	40	0,250	768033 65100
2" x 1"	64	47,5	20	34,5	0,418	768033 66000
2" x 2"	64	47,5	20	40	0,370	768033 66300

