

283001_L_HIGH PRESSURE PN400



THREE-way ball valve ATEX II 2 G-D T4 with "L" port

Drive: ISO 5211 - DIN 3337 flange for actuator

Connection: ISO 228 female/female/female thread

Flow: Full

Material: Aisi 316L (1.4404)

Measure: from 1/4" to 1"

Seals: **DEVLON**

Operating temperature: -20°C+125°C

Outer finish: Turned

Screws for mounting actuator included

On request:

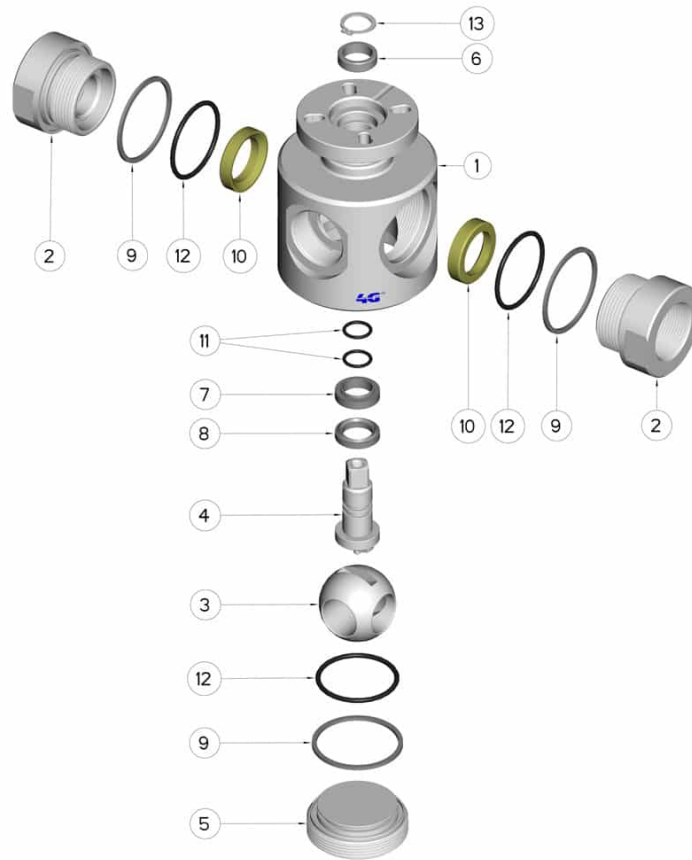
M.O.C.A. CE 1935/2004

•MANUAL with LEVER

• Seals made of:

Delrin POM -30°+95°C

| G | DN | L | I | P | H | M | N | Ø A | PN | Kg | ISO-DIN | Ø a | b | Øc x o | □ | d | e | f | g | n° 4 Bolts | Nm | CODE |
|------|----|-----|----|----|-----|------|------|-----|-----|------|-------------------|-----|----|--------|-------|------|----|----|---|-------------|----|--------------|
| 1/4" | 8 | 70 | 15 | 13 | 84 | 53 | 31 | 60 | 400 | 1,35 | F.03 / F.04 | 55 | 10 | 25x6 | 9/11 | 9,5 | 36 | 42 | 6 | M5x16 | 20 | 283001A604L0 |
| 3/8" | 8 | 70 | 15 | 13 | 84 | 53 | 31 | 60 | 400 | 1,30 | F.03 / F.04 | 55 | 10 | 25x6 | 9/11 | 9,5 | 36 | 42 | 6 | M5x16 | 20 | 283001A608L0 |
| 1/2" | 12 | 80 | 18 | 15 | 87 | 54 | 33 | 65 | 400 | 1,65 | F.04 / F.05 | 65 | 10 | 30x6 | 11/14 | 10,5 | 42 | 50 | 6 | M5x16/M6x16 | 25 | 283001A614L0 |
| 3/4" | 17 | 90 | 19 | 15 | 94 | 56,5 | 37,5 | 75 | 400 | 2,22 | F.04 / F.05 | 65 | 10 | 30x6 | 11/14 | 10,5 | 42 | 50 | 6 | M5x16/M6x16 | 35 | 283001A620L0 |
| 1" | 22 | 100 | 20 | 16 | 100 | 59,5 | 40,5 | 85 | 400 | 2,90 | F.04 / F.05 | 65 | 10 | 30x6 | 11/14 | 10,5 | 42 | 50 | 6 | M5x16/M6x16 | 40 | 283001A626L0 |



| POS. | Denomination | PCS | MAT. |
|------|---------------|-----|-------------------|
| 1 | Body | 1 | AISI 316L |
| 2 | Sleeve | 2 | AISI 316L |
| 3 | Ball | 1 | AISI 316L |
| 4 | Stem | 1 | AISI 316L |
| 5 | Plug | 1 | AISI 316L |
| 6 | Pin Seals | 1 | GLASS filled PTFE |
| 7 | Pin Seals | 1 | INOX FILLED PTFE |
| 8 | Pin Seals | 1 | INOX FILLED PTFE |
| 9 | Sleeve Seal | 3 | INOX FILLED PTFE |
| 10 | Ball Seals | 2 | DEVLON |
| 11 | O-Ring Pin | 2 | FKM |
| 12 | O-Ring Sleeve | 3 | FKM |
| 13 | Seeger | 1 | AISI 420 |

