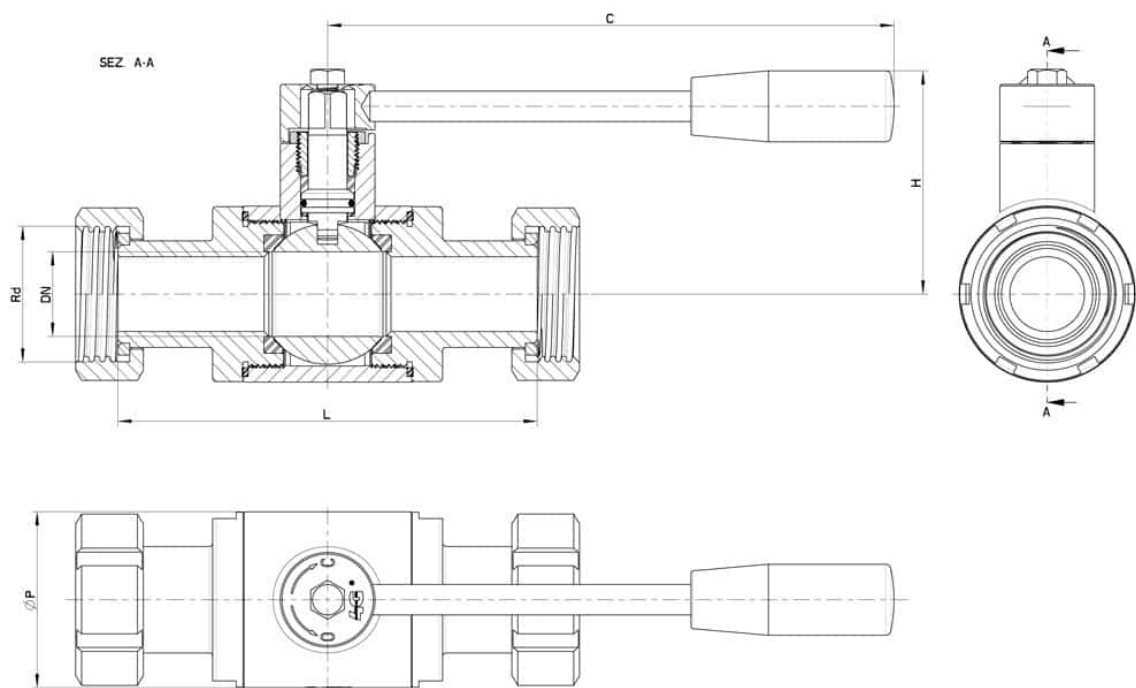


## 100146 STANDARD SEALS - M/M SMS



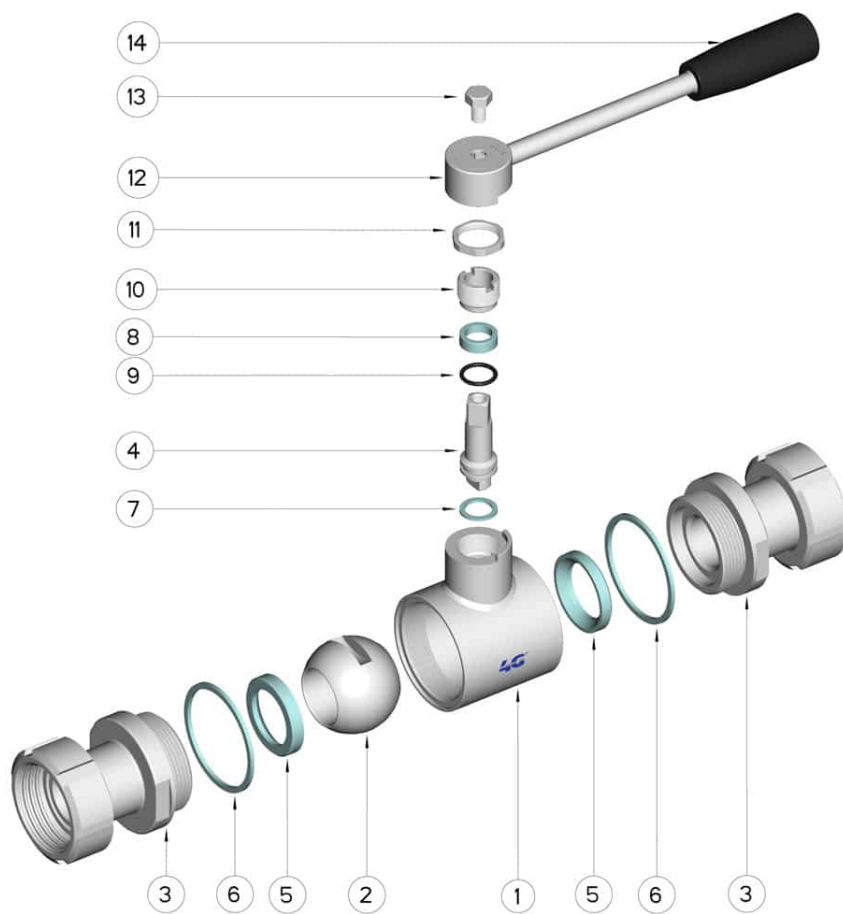
TWO-way ball valve  
Drive: Inox lever  
Connection: SMS male/male  
Flow: Full  
Material: Aisi 304L (1.4307) - Aisi 316L (1.4404)  
Measure: from DN20 to DN100  
Seals: Modified Virgin P.T.F.E.  
Operating temperature: -20°C+170°C  
Outer finish: Polished

On request:  
Antistatic device ATEX:  
II 2G Ex h IIC T4 Gb  
II 2D Ex h IIIC T135°C Db  
M.O.C.A. CE 1935/2004  
• Seals made of:  
PTFE with glass -20°C+170°C  
PTFE with carbographite -20°C+180°C  
PTFE with inox -20°C+200°C  
UHMW High-molecular weight polyethylene -20°C+80°C



DN	SMS	Rd	L	I	C	H	Ø P	PN	Kg	CODE AISI 304L	CODE AISI 316L
20	(Reduced) 25	40 x 1/6"	114	20	110	60	42	100	1,06	-	100146 62410
25	25	40 x 1/6"	124	20	160	65	52	64	1,55	-	100146 62610
40	38	60 x 1/6"	144	25	190	80	73	64	3,04	-	100146 63410
50	51	70 x 1/6"	156	26	190	90	88	40	4,54	-	100146 63810
65	63	85 x 1/6"	178	30	220	110	113	40	7,66	-	100146 64410
65	(Reduced) 76	98 x 1/6"	182	30	235	110	113	40	7,66	-	100146 64510
80	76	98 x 1/6"	198	32	285	130	135	40	10,8	100146 44810	100146 64810
100	104	125 x 1/4"	206	32	310	150	167	25	17,26	100146 45410	100146 65410
100	101	132 x 1/6"	206	32	310	150	167	25	17,26	100146 45510	100146 65510

\*PASSAGGIO RIDOTTO



POSITION	DENOMINATION	PIECES	MATERIAL
1	Body	1	AISI (304L) 316L
2	Ball	1	AISI (304L) 316L
3	Sleeves	2	AISI (304L) 316L
4	Stem	1	AISI (304L) 316L
5	Ball Seals	2	PTFE
6	Sleeve Seals	2	PTFE
7	Inferior stem Seal	1	PTFE
8	Upper stem Seal	1	PTFE
9	Stem or-Seal	1	FKM
10	Register ring	1	AISI 303
11	Locknut	1	AISI 303
12	Lever	1	AISI 304L
13	SCREW	1	AISI 304L
14	Handle	1	DUROPLASTO (PF)

