

## 715092 BLINDFLANSCHEN PN 10 - 16 UNI EN 1092-1

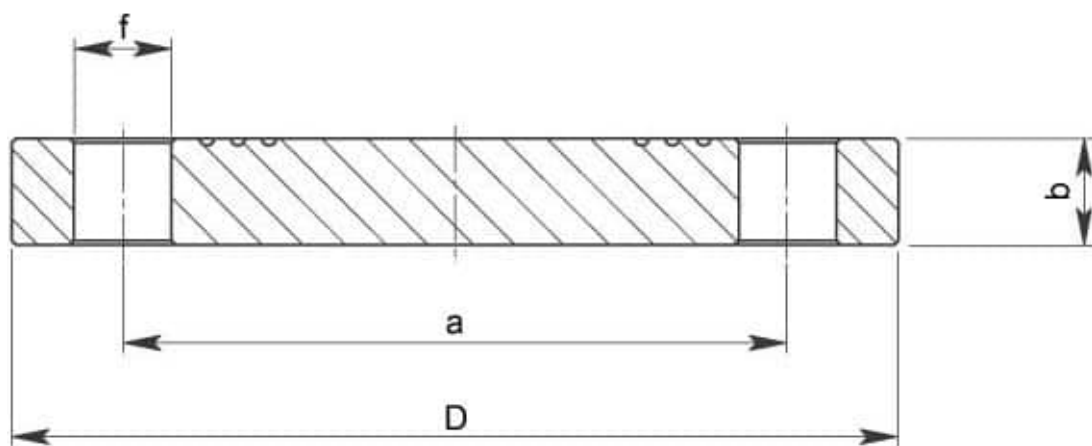


Blindflansche PN 10 - 16 UNI EN 1092-1 TYP 05 aus Stange (ex UNI 6092-6093)

Material: AISI 304L (1.4307) - AISI 316L (1.4404)

Auf Anfrage:

M.O.C.A. CE 1935/2004



DN - (PN)	D x b	a	f	n° fori	Kg	CODE AISI 304L	CODE AISI 316L
65	185 x 18	145	18	4	3,645	715092 44400	715092 64400
80	200 x 20	160	18	8	4,602	715092 44800	715092 64800
100	220 x 20	180	18	8	5,635	715092 45400	715092 65400
125	250 x 22	210	18	8	8,111	715092 45800	715092 65800
150	285 x 22	240	22	8	10,474	715092 46200	715092 66200
200 - (PN 10)	340 x 24	295	22	8	16,510	715092 46400	715092 66400
200 - (PN 16)	340 x 24	295	22	12	16,224	715092 46500	715092 66500



