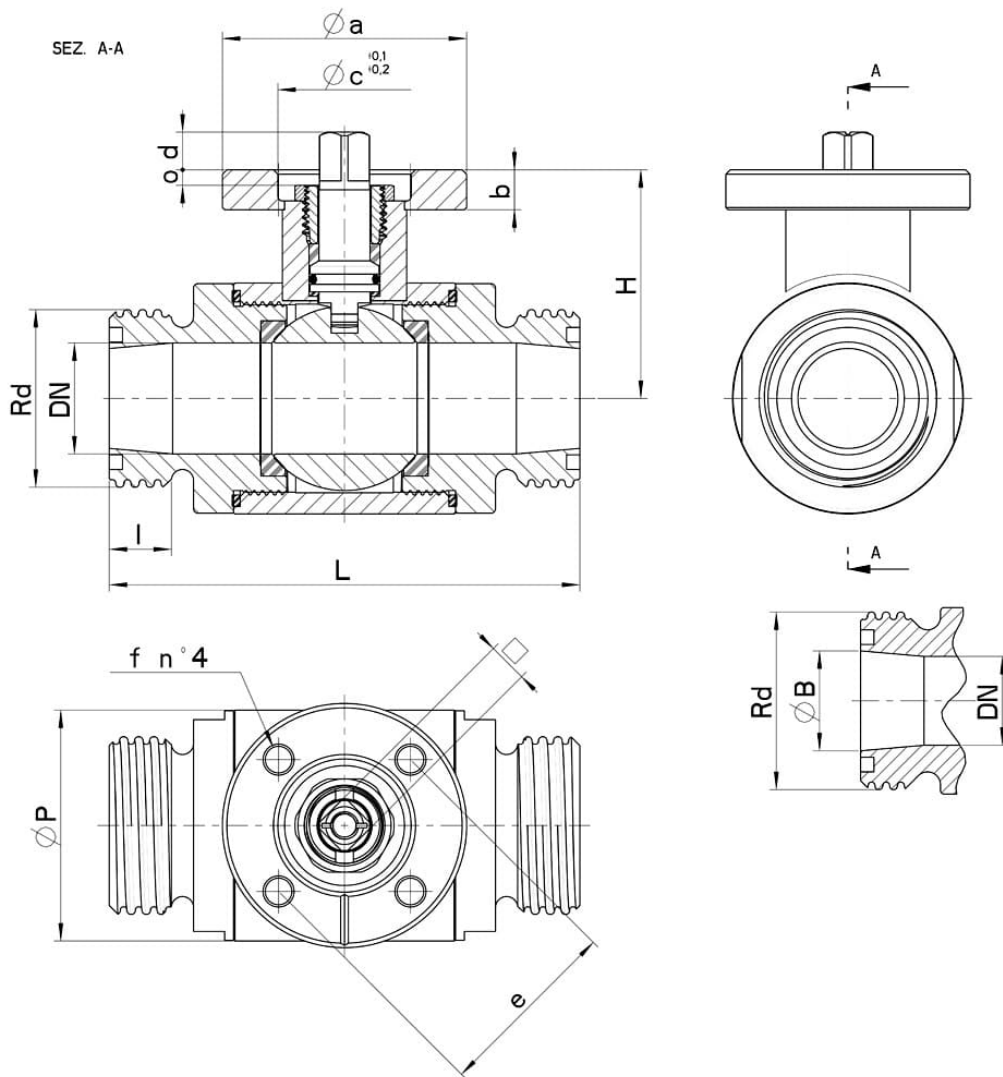


103044 STANDARD DICHTUNG - I/I SMS

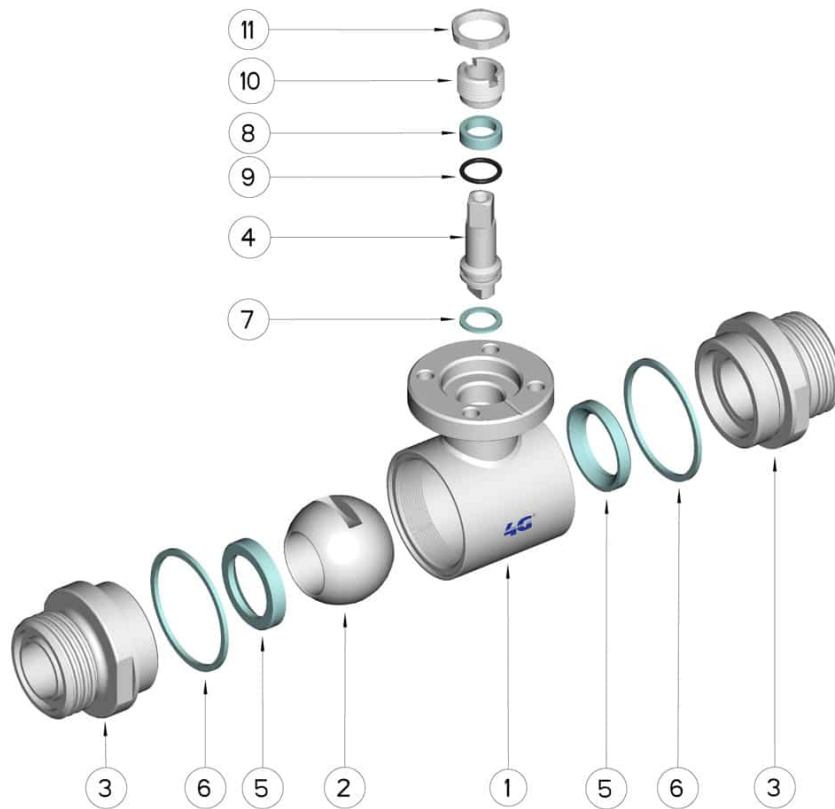


ZWEI Wege Kugelhahn
Bedienelement: Flansch für Antrieb ISO 5211 - DIN 3337
Anschlüsse: Innengewinde/Innengewinde SMS
Durchgang: Voll
Material: Aisi 304L (1.4307) - Aisi 316L (1.4404)
Abmessungen: von DN20 bis DN100
Dichtungen: Rein Modifiziert PTFE
Betriebstemperatur: -20°C+170°C
Oberflächenbehandlung: Poliert
Einschließlich Schrauben für Antriebsmontage

Auf Anfrage:
Antistatische Vorrichtung ATEX:
II 2G Ex h IIC T4 Gb
II 2D Ex h IIIC T135°C Db
M.O.C.A. CE 1935/2004
• Dichtungen aus:
PTFE mit Glas -20°C+170°C
PTFE mit Carbogرافit -20°C+180°C
PTFE mit Inox -20°C+200°C
UHMW Polyethylen mit hoher Dichte -20°C+80°C



| DN | Ø B | SMS | Rd | L | I | H | Ø P | PN | Kg | ISO-DIN | Ø a | b | Ø c x o | □ | d | e | f | n° 4 Schrauben | Nm | CODE AISI 304L | CODE AISI 316L |
|-----|------|-----------------|------------------|-----|----|------|-----|-----|----|---------|-----|----|---------|----|----|-----|----|-------------------|----|-------------------|-------------------|
| 20 | 22,5 | (Reduced) 25 | 40 x 1/6" | 102 | 19 | 45 | 42 | 100 | - | F.03 | 46 | 9 | 25x3 | 9 | 8 | 36 | 6 | M5x16 | 12 | - | 103044 62410 |
| 20 | 22,5 | (Reduced) 25 | 40 x 1/6" | 102 | 19 | 45 | 42 | 100 | - | F.04 | 54 | 9 | 30x3 | 11 | 10 | 42 | 6 | M5x16 | 12 | - | 103044 6241F |
| 25 | 22,5 | 25 | 40 x 1/6" | 106 | 19 | 51,5 | 52 | 64 | - | F.04 | 54 | 9 | 30x3 | 11 | 10 | 42 | 6 | M5x16 | 15 | - | 103044 62610 |
| 25 | 22,5 | 25 | 40 x 1/6" | 106 | 19 | 51,5 | 52 | 64 | - | F.05 | 65 | 9 | 35x3 | 14 | 13 | 50 | 7 | M6x16 | 15 | - | 103044 6261F |
| 40 | 35,5 | 38 | 60 x 1/6" | 126 | 19 | 76 | 73 | 64 | - | F.05 | 65 | 12 | 35x4 | 14 | 13 | 50 | 7 | M6x20 | 25 | - | 103044 63410 |
| 40 | 35,5 | 38 | 60 x 1/6" | 126 | 19 | 76 | 73 | 64 | - | F.07 | 90 | 12 | 55x4 | 17 | 15 | 70 | 9 | M8x20 | 25 | - | 103044 6341F |
| 50 | 48,5 | 51 | 70 x 1/6" | 136 | 20 | 84 | 88 | 40 | - | F.05 | 65 | 12 | 35x4 | 14 | 13 | 50 | 7 | M6x20 | 30 | - | 103044 63810 |
| 50 | 48,5 | 51 | 70 x 1/6" | 136 | 20 | 84 | 88 | 40 | - | F.07 | 90 | 12 | 55x4 | 17 | 15 | 70 | 9 | M8x20 | 30 | - | 103044 6381F |
| 65 | 60,5 | 63 | 85 x 1/6" | 154 | 22 | 94,5 | 113 | 40 | - | F.07 | 90 | 12 | 55x4 | 17 | 15 | 70 | 9 | M8x20 | 45 | - | 103044 64410 |
| 65 | 60,5 | 63 | 85 x 1/6" | 154 | 22 | 94,5 | 113 | 40 | - | F.10 | 125 | 12 | 70x4 | 22 | 18 | 102 | 11 | M10x25 | 45 | - | 103044 6441F |
| 65 | 72 | (Reduced) 76 | 98 x 1/6" | 154 | 22 | 94,5 | 113 | 40 | - | F.07 | 90 | 12 | 55x4 | 17 | 15 | 70 | 9 | M8x20 | 45 | - | 103044 64510 |
| 65 | 72 | (Reduced) 76 | 98 x 1/6" | 154 | 22 | 94,5 | 113 | 40 | - | F.10 | 125 | 12 | 70x4 | 22 | 18 | 102 | 11 | M10x25 | 45 | - | 103044 6451F |
| 80 | 72,2 | 76 | 98 x 1/6" | 184 | 27 | 106 | 135 | 40 | - | F.07 | 90 | 12 | 55x4 | 17 | 15 | 70 | 9 | M8x20 | 70 | 103044 44810 | 103044 64810 |
| 80 | 72,2 | 76 | 98 x 1/6" | 184 | 27 | 106 | 135 | 40 | - | F.10 | 125 | 12 | 70x4 | 22 | 18 | 102 | 11 | M10x25 | 70 | 103044 4481F | 103044 6481F |
| 100 | 98 | 104 | 125 x 1/4" | 190 | 28 | 120 | 167 | 25 | - | F.07 | 90 | 12 | 55x4 | 17 | 15 | 70 | 9 | M8x20 | 80 | 103044 45410 | 103044 65410 |
| 100 | 98 | 104 | 125 x 1/4" | 190 | 28 | 120 | 167 | 25 | - | F.10 | 125 | 12 | 70x4 | 22 | 18 | 102 | 11 | M10x25 | 80 | 103044 4541F | 103044 6541F |
| 100 | 98 | 101 | 132 x 1/6" | 190 | 28 | 120 | 167 | 25 | - | F.07 | 90 | 12 | 55x4 | 17 | 15 | 70 | 9 | M8x20 | 80 | 103044 45510 | 103044 65510 |
| 100 | 98 | 101 | 132 x 1/6" | 190 | 28 | 120 | 167 | 25 | - | F.10 | 125 | 12 | 70x4 | 22 | 18 | 102 | 11 | M10x25 | 80 | 103044 4551F | 103044 6551F |



| POSITION | BEZEICHNUNG | STÜCKE | MATERIAL |
|----------|------------------|--------|---------------------------|
| 1 | Gehäuse | 1 | AISI (304L) 316L |
| 2 | Kugel | 1 | AISI (304L) 316L |
| 3 | Muffen | 2 | AISI (304L) 316L |
| 4 | Stift | 1 | AISI (304L) 316L |
| 5 | Kugeldichtungen | 2 | Modifiziertes junges PTFE |
| 6 | Muffendichtungen | 2 | PTFE |
| 7 | Stiftdichtung | 1 | PTFE |
| 8 | Stiftdichtung | 1 | PTFE |
| 9 | Stiftdichtung OR | 1 | FKM |
| 10 | Registerring | 1 | AISI 304L (303) |
| 11 | Kontermutter | 1 | AISI 303 |

