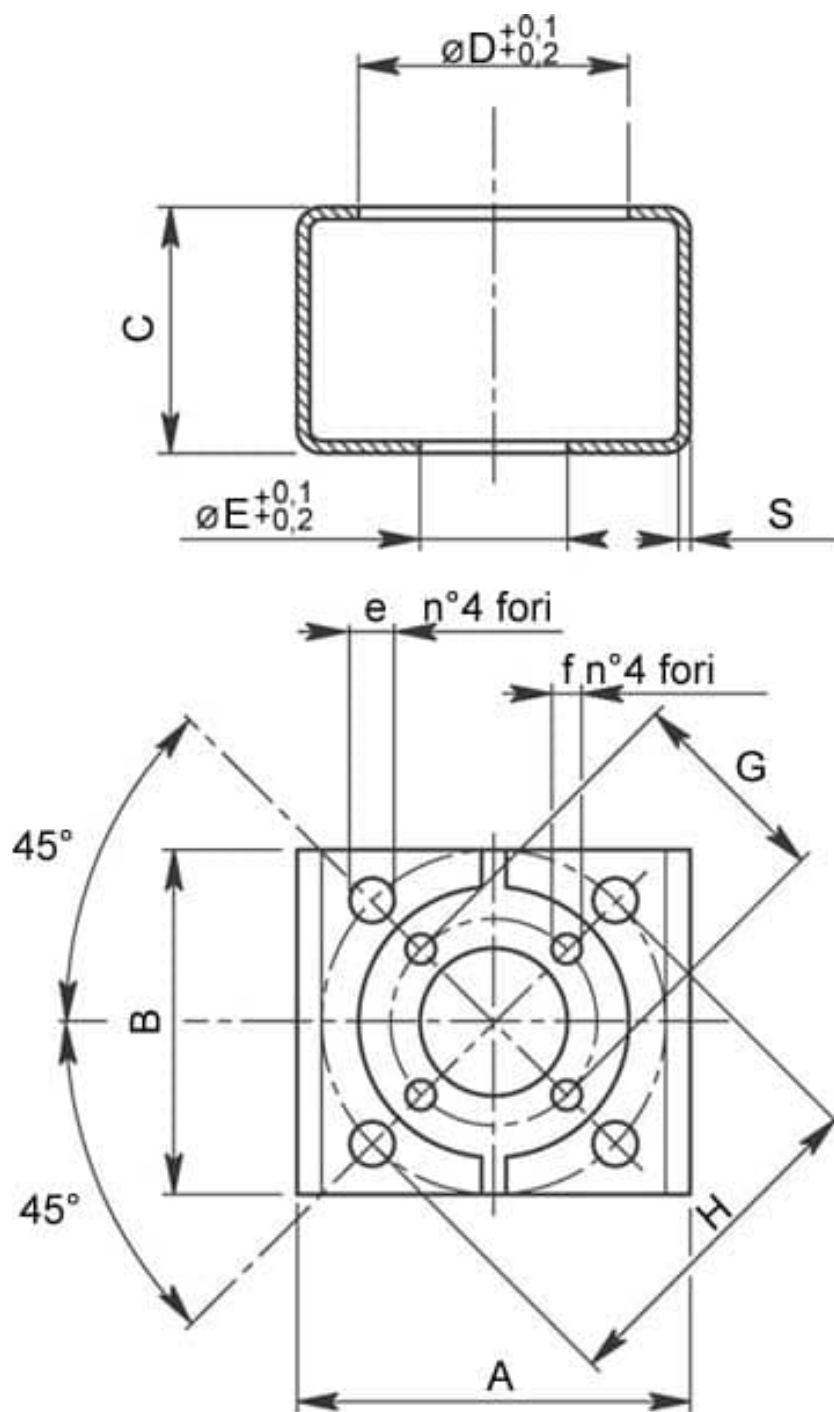


747010 BRACKETS INOX AISI 304 A NORME ISO 5211



Brackets per Attuatore a norme ISO 5211
Materiale: Aisi 304L (1.4307)



| ISO-DIN | A | B | C | Ø D | Ø E | H | G | e | f | S | Kg | CODICE AISI 304L |
|-----------|-----|-----|----|-----|-----|-----|-----|----|----|-----|------|------------------|
| F.04-F.03 | 50 | 45 | 40 | 30 | 25 | 42 | 36 | 6 | 6 | 2,5 | 0,11 | 747010 41000 |
| F.04-F.04 | 50 | 45 | 40 | 30 | 30 | 42 | 42 | 6 | 6 | 2,5 | 0,10 | 747010 41500 |
| F.07-F.07 | 80 | 70 | 50 | 55 | 55 | 70 | 70 | 9 | 9 | 2,5 | 0,21 | 747010 44500 |
| F.10-F.10 | 110 | 100 | 70 | 70 | 70 | 102 | 102 | 11 | 11 | 3 | 0,59 | 747010 46000 |
| F.12-F.07 | 130 | 115 | 70 | 85 | 55 | 125 | 70 | 13 | 9 | 3 | 0,81 | 747010 46500 |
| F.12-F.10 | 130 | 115 | 70 | 85 | 70 | 125 | 102 | 13 | 11 | 3 | 0,78 | 747010 47000 |
| F.12-F.12 | 130 | 115 | 70 | 85 | 85 | 125 | 125 | 13 | 13 | 3 | 0,70 | 747010 47200 |
| F.14-F.10 | 150 | 130 | 70 | 100 | 70 | 140 | 102 | 17 | 11 | 4 | 1,29 | 747010 47500 |
| F.14-F.12 | 150 | 130 | 70 | 100 | 85 | 140 | 125 | 17 | 13 | 4 | 1,20 | 747010 48000 |

